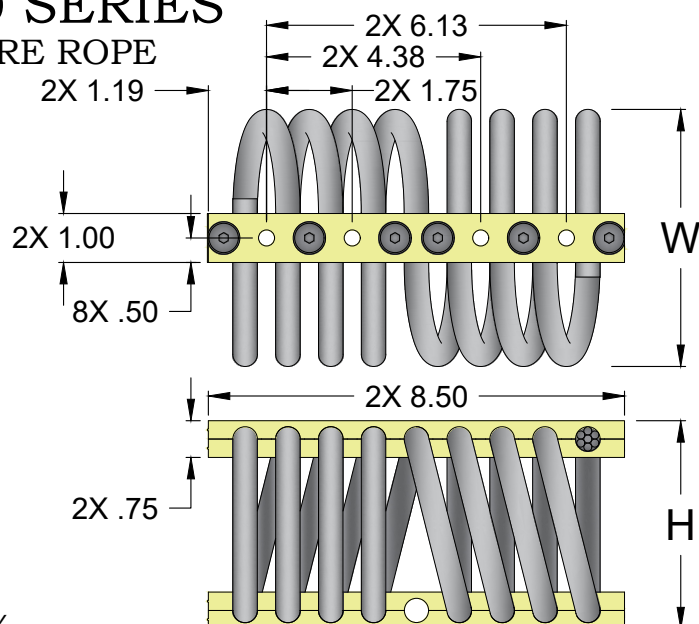
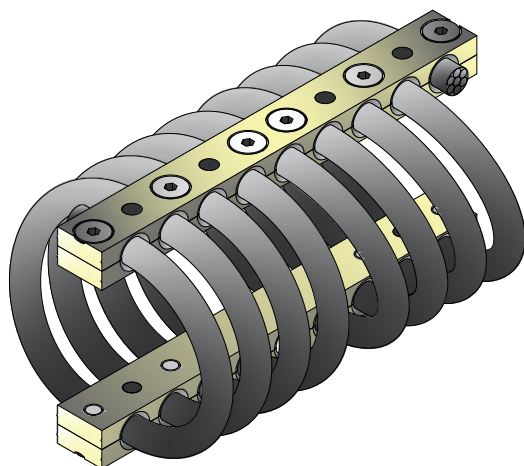


## CB1400 SERIES

1/2" WIRE ROPE



## NOTES

1. ALL DIMENSIONS ARE IN INCHES. INTERPRET PER ANSI Y14
2. ALL DIMENSIONS ARE NOMINAL AND FOR REFERENCE ONLY

ISOLATOR PART NO.	NOMINAL H (in)	NOMINAL W (in)	LOAD MODE	SHOCK AVERAGE K (lb/in)	VIBRATION AVERAGE K (lb/in)	MAX. RATED DYNAMIC TRAVEL (lb/in)
CB1400-10-[ ]	3.00	3.31	COMPRESSION	3515	8550	1.10
			SHEAR/ROLL	1801	1785	1.10
			45 DEG. C/R	1750	5000	2.00
CB1400-12-[ ]	3.00	3.63	COMPRESSION	3145	7500	1.20
			SHEAR/ROLL	1531	1750	1.20
			45 DEG. C/R	1550	4600	2.00
CB1400-15-[ ]	3.25	4.00	COMPRESSION	2650	6525	1.40
			SHEAR/ROLL	1080	1475	1.60
			45 DEG. C/R	1435	4350	2.40
CB1400-17-[ ]	3.50	4.13	COMPRESSION	2090	5000	1.60
			SHEAR/ROLL	865	1075	1.80
			45 DEG. C/R	1120	3500	2.80
CB1400-20-[ ]	3.75	4.75	COMPRESSION	1365	3650	2.00
			SHEAR/ROLL	740	740	2.00
			45 DEG. C/R	775	2445	3.20
CB1400-25-[ ]	4.00	5.00	COMPRESSION	1135	2950	2.20
			SHEAR/ROLL	580	650	2.20
			45 DEG. C/R	650	1850	3.40
CB1400-30-[ ]	4.25	5.25	COMPRESSION	905	2250	2.40
			SHEAR/ROLL	420	560	2.40
			45 DEG. C/R	525	1250	3.20
CB1400-40-[ ]	4.90	5.65	COMPRESSION	665	1700	2.80
			SHEAR/ROLL	320	425	2.80
			45 DEG. C/R	400	1145	4.00
CB1400-50-[ ]	5.40	6.13	COMPRESSION	500	1250	3.20
			SHEAR/ROLL	260	380	3.20
			45 DEG. C/R	245	750	4.40
CB1400-60-[ ]	6.10	7.10	COMPRESSION	265	525	4.00
			SHEAR/ROLL	145	165	3.60
			45 DEG. C/R	165	360	5.20



JOB NAME:

CUSTOMER :

CUSTOMER P.O.:

SALES ORDER:

MODEL CB1400 SERIES  
WIRE ROPE ISOLATOR
**VMC GROUP**  
 CONTROLLED ENVIRONMENT SOLUTIONS™

Bloomington, NJ Houston, TX Corona, CA Wind Gap, PA

DRAWING NO.:

REVISION:

SHEET:

SCALE :

1 OF 2

NONE

CB [ ] 1400 [ ] - 30 [ ] - C2

MOUNTING HOLE OPTIONS

# OF COILS (BLANK = 8 COILS)

FAMILY SERIES SIZE (-10 THRU -60)

SPECIAL REQUIREMENTS (D\*, R, F, J\*\*)

FAMILY SERIES

WIRE ROPE REQUIREMENTS

BLANK = 302 STAINLESS STEEL (STANDARD), OR G, OR S

# OF COILS (PATTERN OR PROFILE TO MATCH)

FAMILY NAME

**SPECIAL REQUIREMENTS**

<b>D</b>	DFARS*
<b>F</b>	THREAD FREE CABLE
<b>G</b>	GALVANIZED CABLE
<b>J</b>	ALT STYLE CONSTRUCTION**
<b>M</b>	METRIC INSERTS
<b>R</b>	RoHS
<b>S</b>	STAINLESS STEEL TOTAL

\* DFARS COMPLIANT RAW MATERIAL COMES FROM A LIMITED GROUP OF APPROVED SUPPLIERS AND IS NOT REQUIRED ON STANDARD PARTS.

\*\* SUBJECT TO MANUFACTURER'S DISCRETION. CONTACT VMC FOR APPLICABILITY.

**FEATURES & BENEFITS:**

- WIDE RANGE OF AVAILABLE SIZES PERMITS ATTACHMENT TO ALMOST ANY MACHINERY OR ENCLOSURE REGARDLESS OF WEIGHT.
- COMPACT, LOW-PROFILE DESIGN AND THE ABILITY TO ATTENUATE HEAVY SHOCK LOADS WITH MINIMUM DEFLECTION ALLOWS USE WHERE SPACE IS AT A PREMIUM.
- THREE-PLANE, ALL-AXIS ISOLATION MEANS THAT EQUIPMENT IS FREE TO MOVE IN ANY DIRECTION - VERTICALLY, HORIZONTALLY, AND Laterally.
- CUSTOM WINDING, LOOP COUNT AND MOUNTING FEATURES ARE AVAILABLE TO MEET SPECIFIC REQUIREMENTS.
- OPERATING TEMPERATURE RANGE -400F TO +700F.

**STANDARD MATERIALS / FINISHES:**

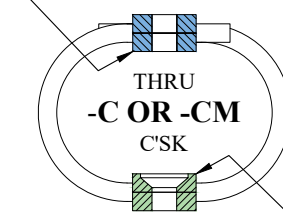
- **WIRE ROPE MATERIALS:** SERIES 302 STAINLESS STEEL.
- **BAR MATERIALS:** ALUMINUM ALLOY 6061-T6, -T6510, OR -T6511 PER SAE AMS4113, SAE AMS4150, OR ASTM B221 WITH CHEMICAL CONVERSION COATING PER MIL-DTL-5541, CLASS 1A.

**SPECIAL OPTIONS:**

- **WIRE ROPE MATERIALS:** GALVANIZED, IMPROVED PLOW WIRE, PLASTIC FILLED VALLEY WIRE, INCONEL 600, STAINLESS STEEL TYPE 316, STAINLESS STEEL TYPE 305.
- **BAR MATERIALS:** STAINLESS STEEL, CRES TYPE 302, 303, 304, OR 304L WITH FINISH PASSIVATED PER QQ-P-35C TYPE II.
- **MOUNTING CONFIGURATIONS:** INSERTS, THREAD TYPES, CLEARANCE HOLES.
- CONTACT VMC FOR OTHER MATERIAL AVAILABILITIES.

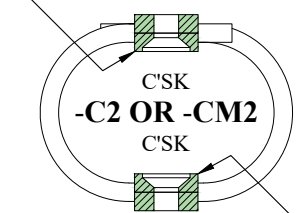
**MOUNTING HOLE OPTIONS:****M = METRIC** M C'SK = Ø.328 X 90° M INSERT = M6 X 1.0

4X Ø.328 THRU HOLE



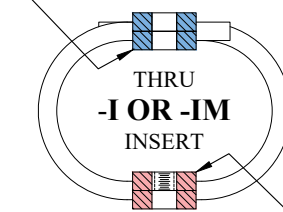
4X Ø.328 X C'SK 82°

4X Ø.328 X C'SK 82°



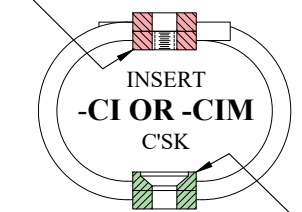
4X Ø.328 X C'SK 82°

4X Ø.328 THRU HOLE



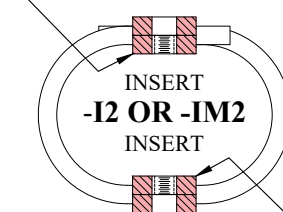
4X INSERT 1/4 - 28

4X INSERT 1/4 - 28



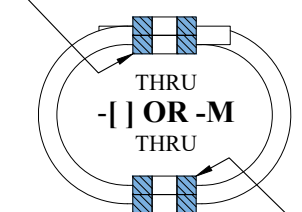
4X Ø.328 X C'SK 82°

4X INSERT 1/4 - 28



4X INSERT 1/4 - 28

4X Ø.328 THRU HOLE



4X Ø.328 THRU HOLE



JOB NAME:

CUSTOMER :

CUSTOMER P.O.:

SALES ORDER:

## MODEL CB1400 SERIES WIRE ROPE ISOLATOR


**VMC GROUP**  
 CONTROLLED ENVIRONMENT SOLUTIONS™

Bloomingdale, NJ Houston, TX Corona, CA Wind Gap, PA

DRAWING NO.:

REVISION:

SHEET:

SCALE :

2 OF 2

NONE